



Siedon Technologies Ltd



Industrial Hazardous Waste Shredding Processing System

CATALOG VERSION HARDEN_201709-08

SIEDON TECHNOLOGIES LTD.
Email: info@siedontech.com
Tel: +86-020-87566110
Web: www.siedontech.com
Add: No.1 Duping Str., Duna Villages, Panyu, Guangzhou, China

About us



German Technology Cooperation



Focus On Shredding Technology



Quick Service Response



Patented Technologies

SIEDON TECHNOLOGIES LTD. is a leading manufacturer of industrial shredder and recycling equipment in China. We have committed to the development of solid waste shredding and recycling technologies for 16 years. With over hundreds of successful cases, Harden' s products are well received for their stable performance, low maintenance cost, full system design and responsible after-sales service. Harden shredder and system have been widely used for many different applications in the waste management industry. Materials can be shredded include municipal solid waste, metal scraps, industrial waste, paper mill residue, hazardous waste, medical waste, animal waste, kitchen waste and organic waste.

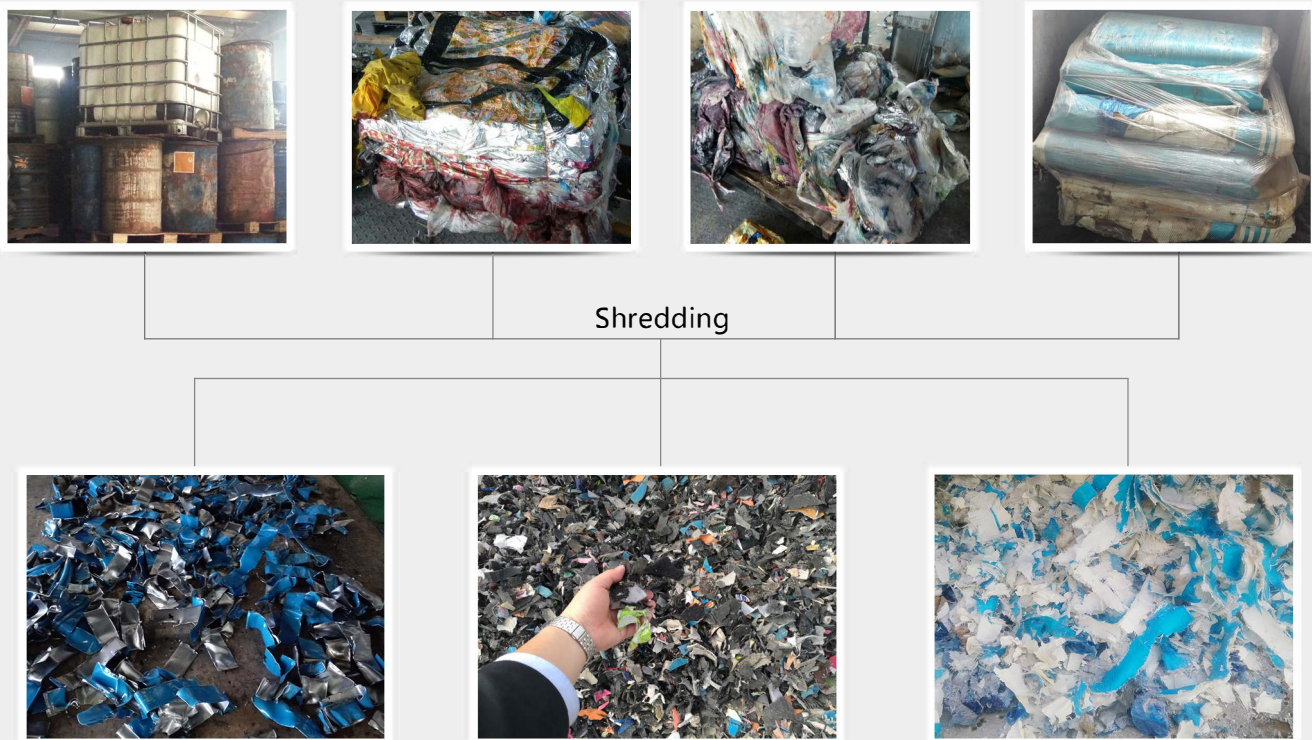


Application

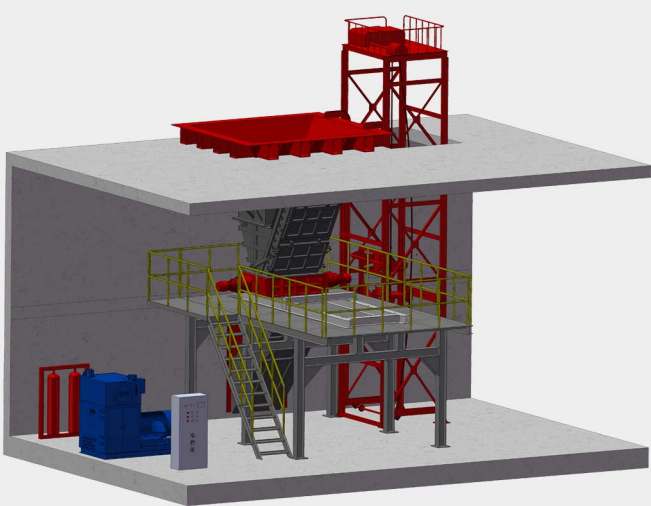
- Size reduction for kiln, mixer and pump(SMP system)
- Break the waste for incineration and improve burning efficiency

Siedon Solution

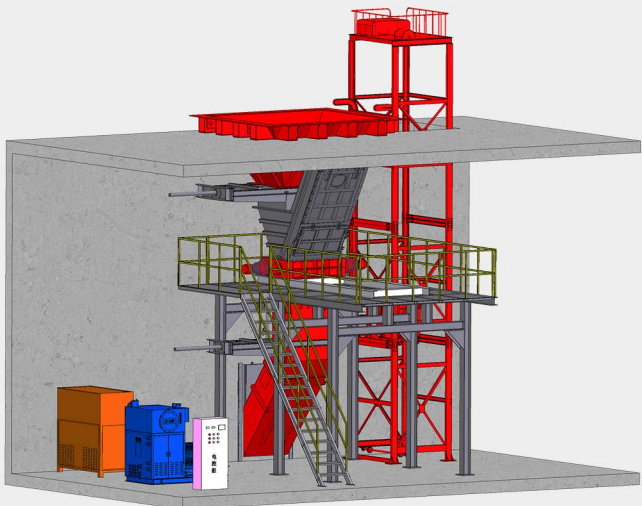
- One-stop system
- Lifter+ Shredder+ Fire control system



CO₂ Fire Protection



N₂ Fire Protection



Shredding

Hazardous waste will be shredded by Harden shredder into small size

After shredding waste is mixed to a homogeneous product

Mixing

Pumping

Mixed waste is transferred to the incineration by Harden robust pump

Feeding



Grab



Lifter

Features



- Driven by imported hydraulic system
- World class hydraulic components maximum pressure 35 Mpa
- Automatic overload protection for core parts
- Knives are made of imported high strength alloy that no worries of metals crushing
- Knife can be repaired by welding to reduce maintenance cost
- Double seals, dustproof maze and material baffle for complex operating conditions
- Automatic fire extinguishing system to ensure safety
- Maintenance mode for labor reducing
- Hydraulic press for forced feeding
- Siemens and Schneider components ensure high stability

| Model | TDH812-75 | TDH812-132 | TDH1216 |
|---------------------------|-----------|------------|-----------|
| Power(kw) | 75 | 132/160 | 200 |
| Cutting chamber size (mm) | 800x1220 | 800x1220 | 1200x1600 |
| Output(t/h) | 3-5 | 5-10 | 10-15 |

